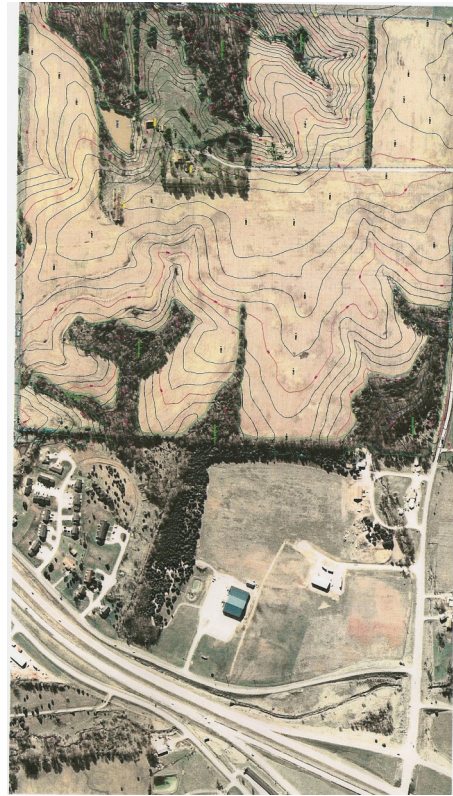
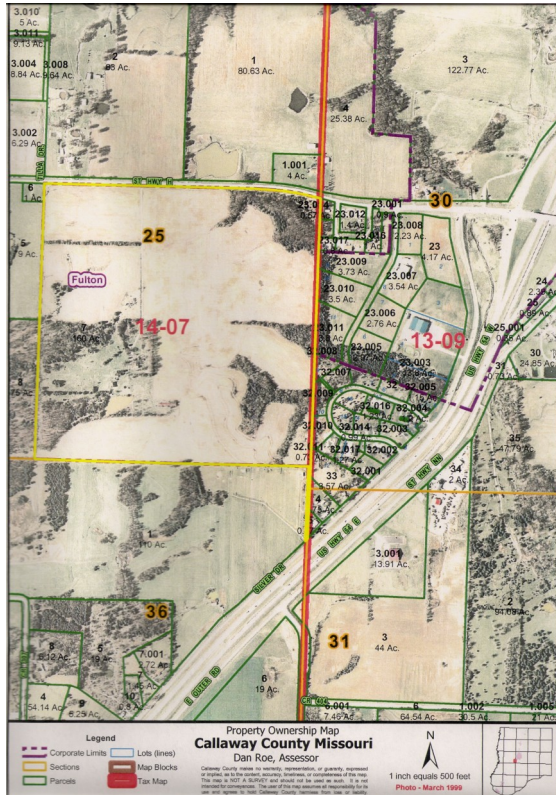


Southside Industrial Park State Road H & U.S. Hwy 54 Fulton, Missouri



Total Acreage Available	160 acres
Property Specifics	The 160-acre site is adjacent and easily accessible to U.S. Highway 54, just six miles south of its interchange with the Midwest's main transportation artery, Interstate 70. The City of Fulton has begun the process of converting this former agricultural property to its second industrial park. Projects requiring all or any combination of acres can be accommodated at this site.
Site Details	Zoned Heavy Industrial As an added benefit to industrial customers who can take advantage of it, the City of Fulton has the capacity to generate and deliver about one million cubic meters of methane gas per year or about 70 cubic feet of methane per minute to this location at significantly reduced rates.



Coordinating economic development in Fulton and Callaway County, Missouri since 1991.

FOR MORE INFORMATION

Bruce Hackmann, President
Fulton Area Development Corporation
2625 Fairway Drive, Suite A
Fulton, MO 65251
573-642-4841
hackmann@fadc.org